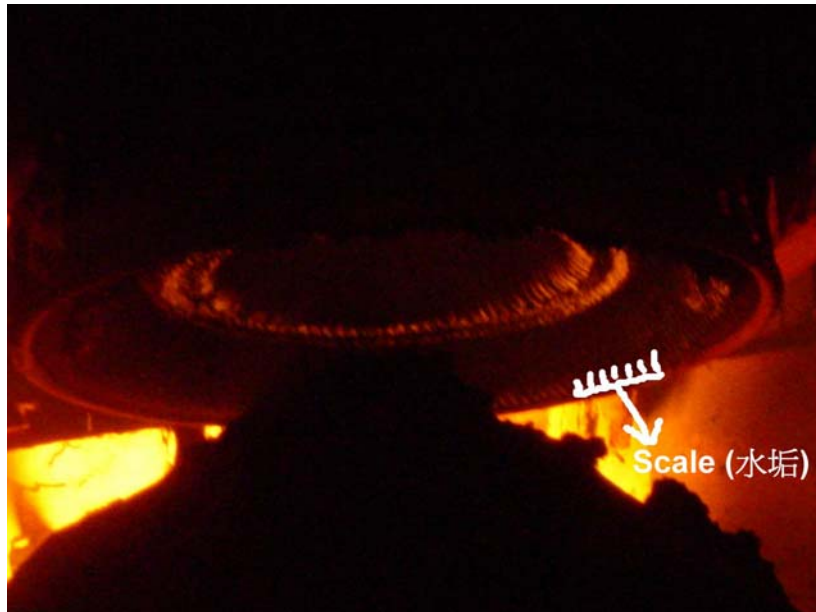


Application: Protect Furnace Cover in the Steel Factory

User: Jinan Steel Factory

The Site:

The steel furnace cover, shown in picture A, has 160 pipes at 3.8mm diameter inside the cover. Temperature at the furnace is at 1800 . Water passed through these pipes to reduce the heat. When hard water was used, pipes might be blocked because of scale. Production had to be stopped and the blocked pipes had to be by-passed. It was a routine practice to stop production every week to by-pass the blocked pipes. It estimated that it cost more than US\$6,000 for each interruption in production. In addition, a new cover had to be installed every 6 months. Water hardness used in the factory is at 320-380ppm.



Picture (A)

Result:

There were three production lines in the factory and one *HydroFLOW* C-160 was installed for each line. After 6 months of installation, two production lines never had to be stopped because of scale blockage. The third line was only stopped twice during the same period.

Other Installation:

- 1) Ma On Shan Steel Factory (China)



- 2) Mindanao Silicon Metal plant (Philippines)



- 3) Jinan Steel Factory (China)



And more